



RICHARD FITTON

OPEN STUDIO 2015



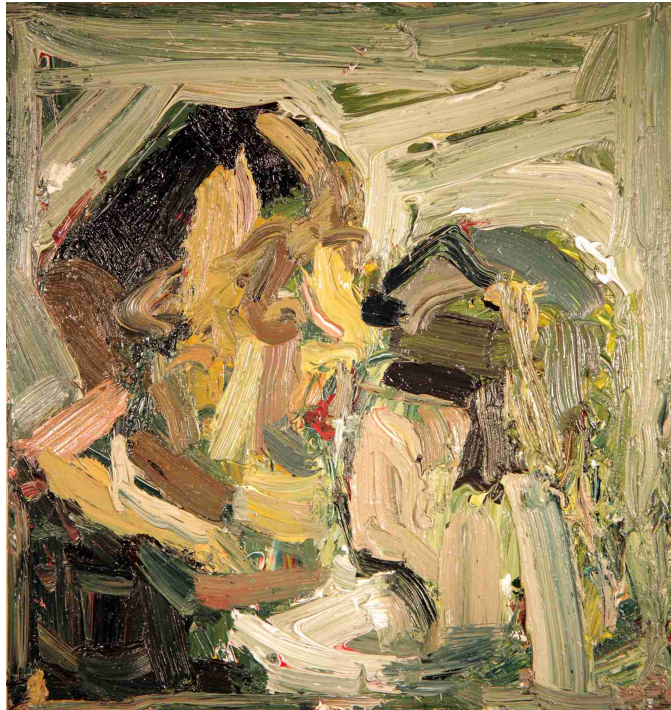
Insomnia

Oil on board
18 x 17.5 cm

Adam

Oil on board
23 x 34 cm





Heads

Oil on board
40 x 40 cm

Skul l

Oil on aluminium
19 x 25 cm

Vani t as

Oil on aluminium
36 x 43 cm

Art i st

Oil on board
18 x 18 cm

The el ect r i c i t y N e i g h b o u r

Oil on board
11 x 14 cm

Nude

Oil on aluminium
15 x 19 cm

G r l

Ink on paper
20 x 30 cm





Schi zophreni a

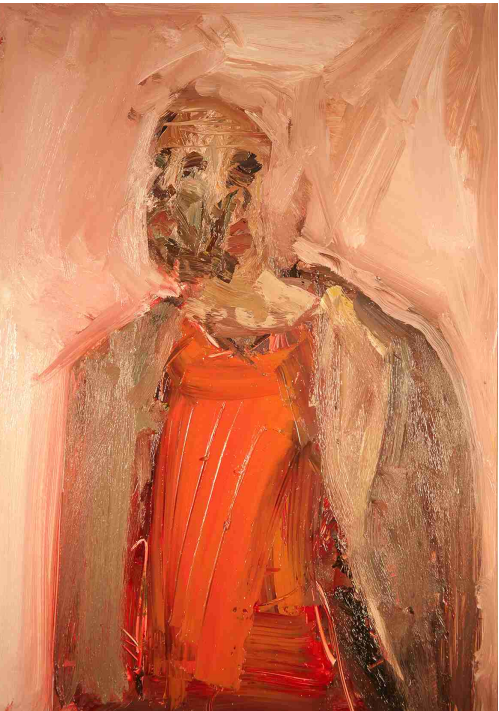
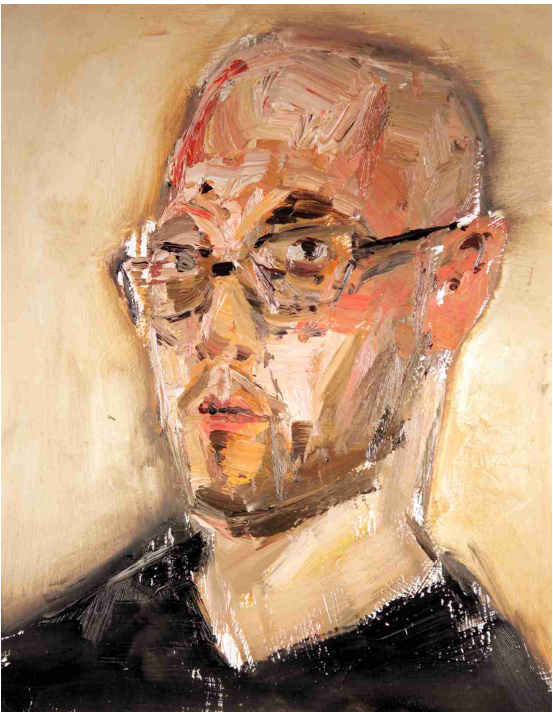
Charcoal on Paper
20 x 18 cm

Sel f portrai tSel f portrai t

Oil on board Oil on board
30 x 24 cm 13 x 20 cm

Schi zophreni aSel f portrai t

Oil on board Charcoal on Paper
24 x 35 cm 28 x 39 cm





Artists hands

Oil on board
35 x 24 cm

Nudi st

Oil on aluminium
35 x 40 cm

Nude

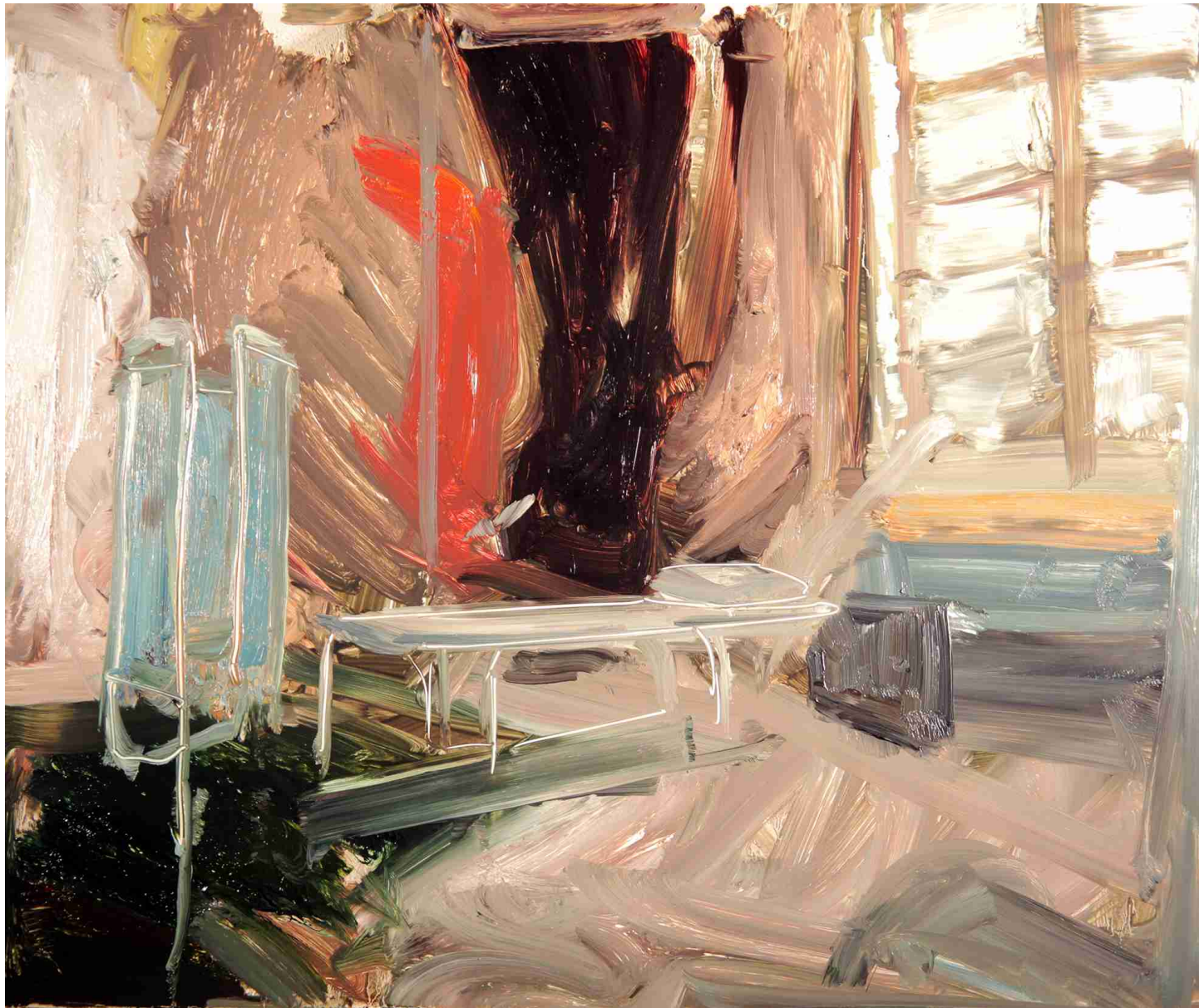
Oil on aluminium
19 x 25 cm

Dead man

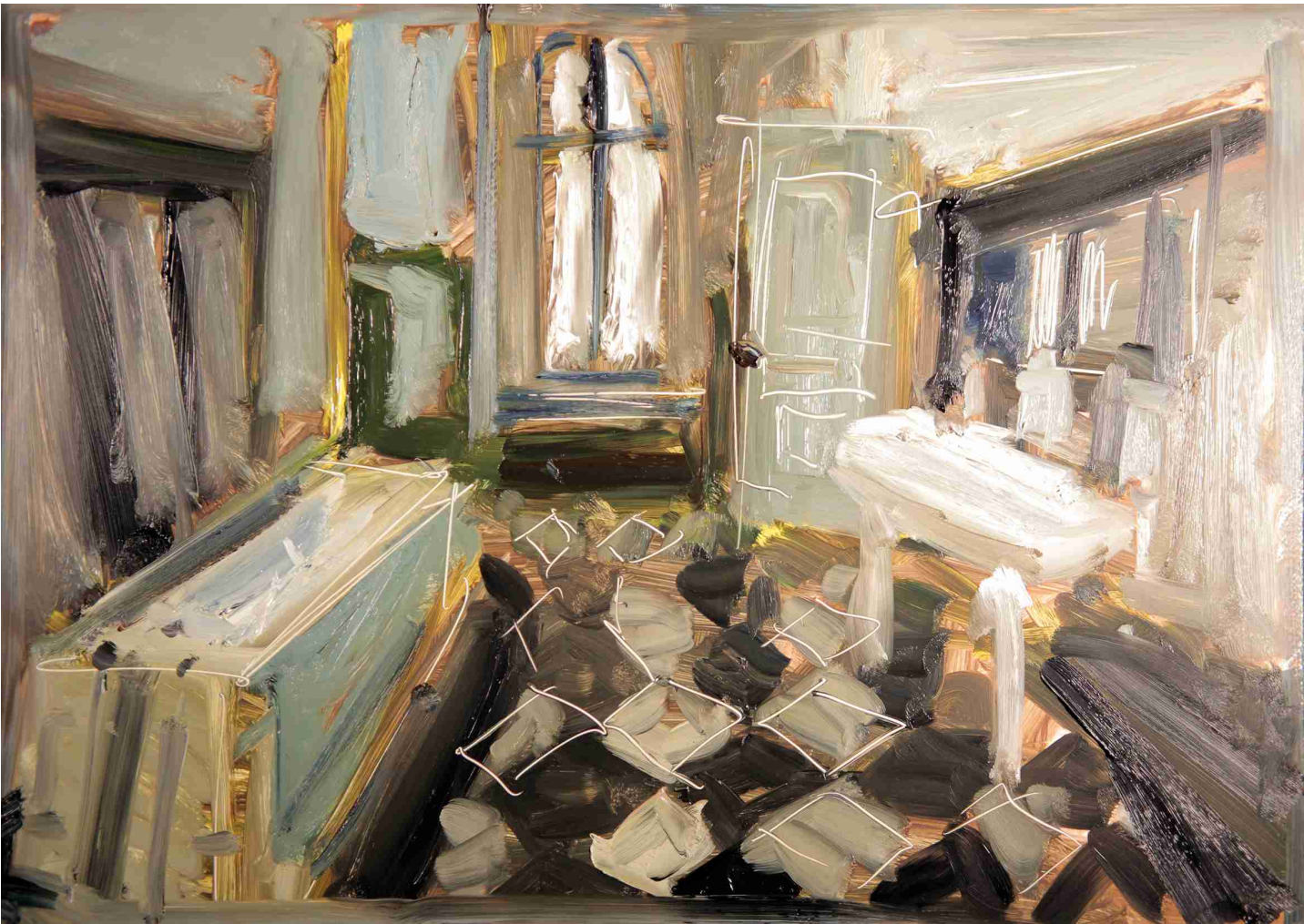
Oil on board
40 x 30 cm

Semi nude

Charcoal on aluminium
49 x 60 cm



Hospi t al
 Oil on aluminium
 39 x 30 cm



Bat hr oom
 Oil on aluminium
 41 x 30 cm



Plumber hands

Oil on board
35 x 24 cm

Richard Fitton is one of the North's most distinctive new artists.

This collection of new work comes from a show held in late 2015 at his Stocksbridge studio - where the industrial edge of Sheffield meets the border of the Peak District - displaying his exciting style and mastery of colour and form through portraits full of human insight and still life studies which bring an electrifying vitality to everyday objects.

Richard graduated from Loughborough University with a 1st class Honours Degree in Fine Art, and gained professional recognition in 2012 when he became the youngest ever member to be elected into the Manchester Academy of Fine Arts, with whom he exhibits annually. Last year marked a milestone in his career with the opening of his one-man exhibition in the city's Portico Gallery.

"There's a real connection with the North in my art," said Richard.

"Everything is based on observation and drawn from life".

Who adds power to the formal elements of shape, tone and colour through a skilful interplay with his materials on the surface of the paintings .

Manchester artist and teacher John McCombs, RBA, was among the first to recognise Richard's talent when he came to his classes as a young boy.

"He just wanted to learn, learn, learn," said John, founder of the new Manchester Group of Artists and winner of the Manchester Art Gallery's People's Prize among many others.

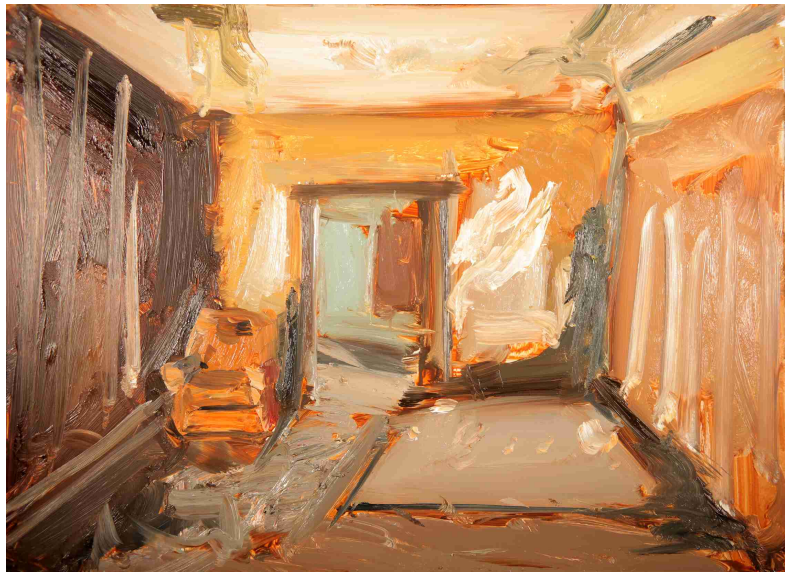
"He was always very good to have in class because his expertise raised the standards of everybody else."

John, a member of the Royal Society of British Artists whose work has been used in many book illustrations and shown on television, said his former pupil is now an inspiration.

"He's got tremendous style and feeling as well. He's gone through several stages, all of which were very exciting," said John.

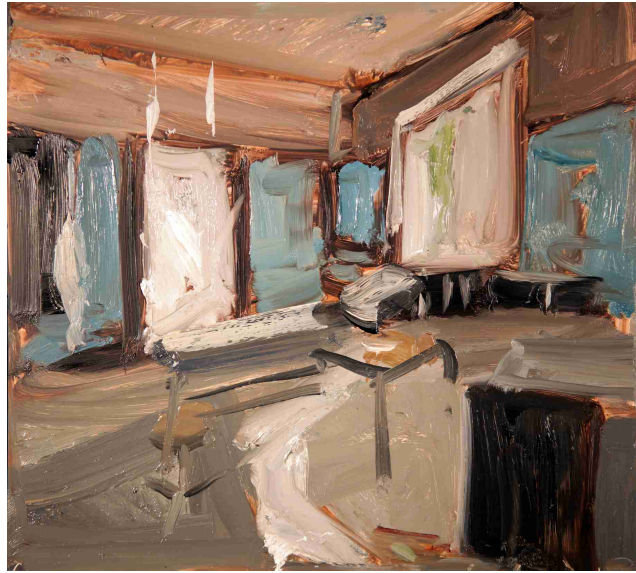
"I don't teach him any more - we just talk, and when he leaves there's nothing else I want to do other than paint."

www.richardfitton.co.uk
richard@richardfitton.co.uk



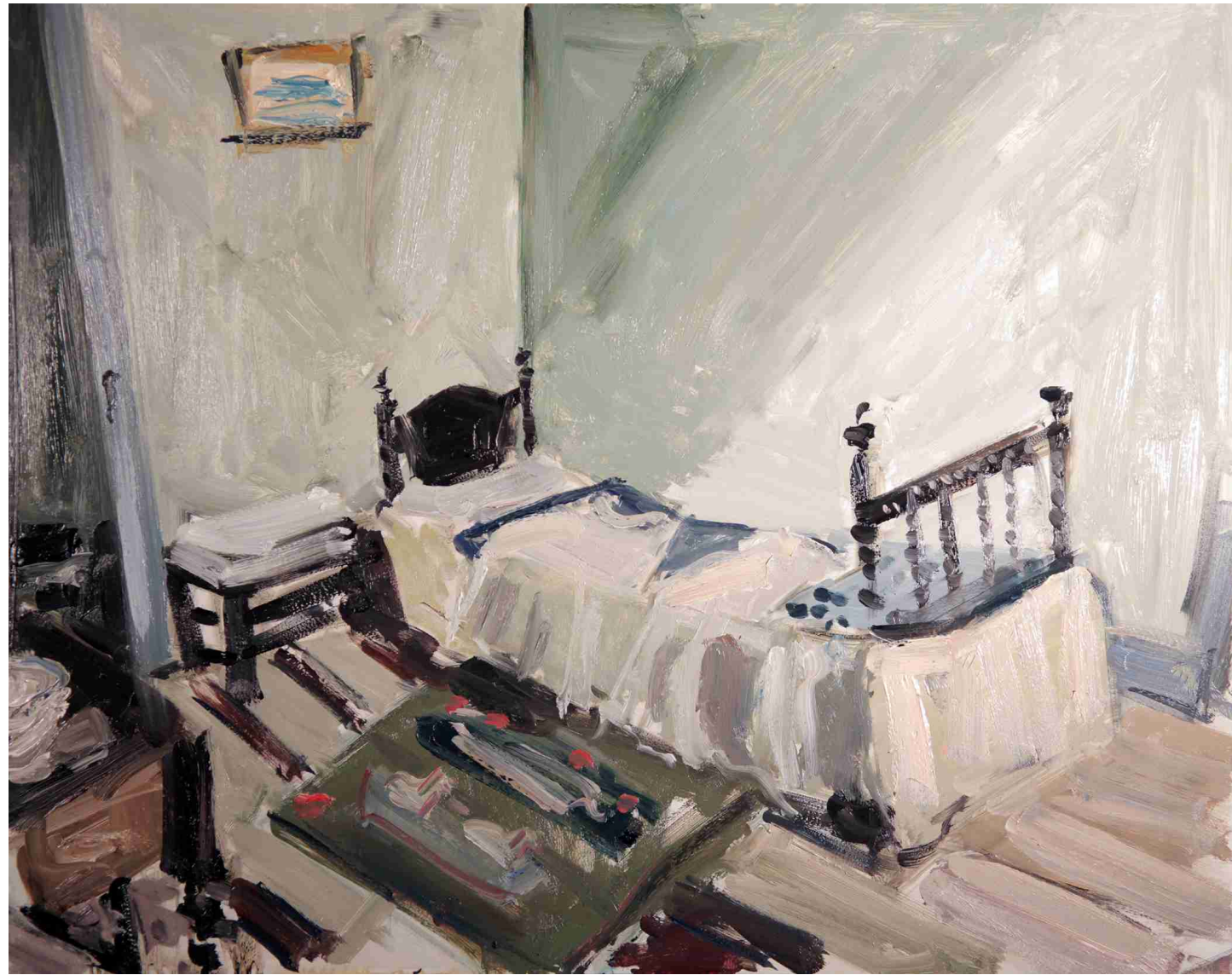
Empty space

Oil on aluminium
38 x 29 cm



Mental hospital

Oil on aluminium
27 x 24 cm



Bedroom

Oil on aluminium
49 x 40 cm

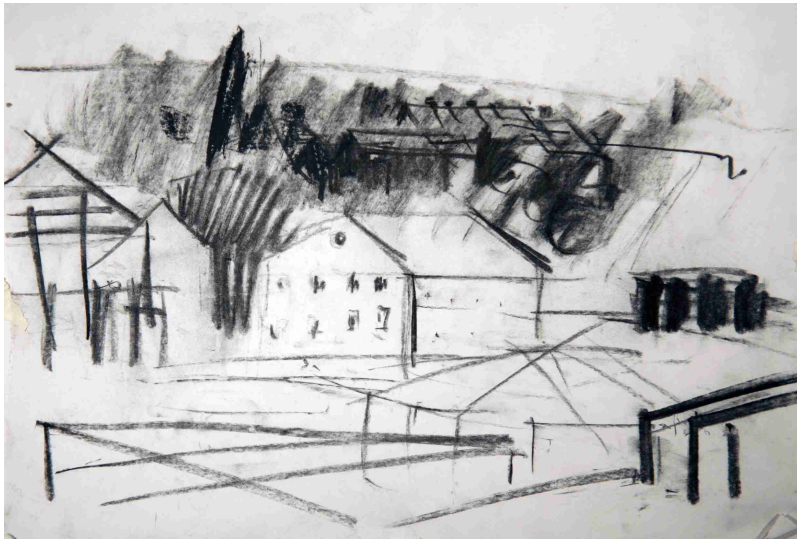


Wild Bowling club

Oil on board 31 x 20 cm Oil on board 31 x 20 cm

Steel works Stocksbridge

Oil on board 32 x 28 cm



Stocksbridge steel works Stocksbridge steel works

Charcoal on Paper 33 x 24 cm Oil on Board 66 x 51 cm

Stocksbridge steel works Stocksbridge houses

Oil on Board 53 x 64 cm Charcoal on Paper 28 x 39 cm



Stockbridge Estate

Oil on board
28 x 23 cm



A good spot in nature

Oil on board
55 x 45 cm